

Your Parish, Your Gift

“It is more blessed to give than to receive”



A gift in your Will can be an expression of your gratitude and thanksgiving towards God, and can help keep your local church alive, and transform its future.

It is important for everyone in our church family, old and young to make a Will, and review it regularly. As you do so, we hope you will remember St Peter's by leaving a legacy gift.

As Christians and members of our local church, many of us have been giving regularly to the mission and ministry of the parish. But we are stewards of everything we own, not just our income, and gifts in Wills are a natural part of Christian giving.

Our Parish Church, St Peter's, burnt down on June 19th 2014 but since then has been rebuilt with massive involvement and donations from villagers and many others. The opening celebration was on Friday 26th August 2022. The rebuilt church retains its Norman framework whilst incorporating many new facilities such as a vestry/office, kitchen, toilets and improved heating, lighting and acoustics in the interior.

A Legacy Lasts Forever



Before

Legacies will allow us to maintain this outstanding community asset and to develop further our links with the Parish and to our much respected Church of England school. A legacy would also help the PCC repay a substantial loan received from the Diocese to complete the rebuild.



After

Our Legacy Policy

Our policy is to use gifts to help fund significant development projects, the most immediate being the fitting out of the church and future maintenance. As needs and circumstances can change over the years, we encourage you to leave a gift in your Will that is unrestricted, i.e. for the general purposes of the church. We will then discuss possible uses of your gift with your executors, bearing in mind your known areas of interest.

Existing Wills can be amended quite easily and cheaply by the addition of a Codicil covering the added legacy you may like to leave to the church. A CofE recommended form, with advice attached, is available from our Vicar or Church Wardens or via: <https://www.churchofengland.org/our-faith/lasting-gift-your-church/writing-your-will>

Suggested wording for your Will:

“I give _____% of my residuary estate OR I give the sum of £ _____ pounds only free of all taxes to the Parochial Church Council of the parish of Ropley (registered charity number 1176142) in the Diocese of Winchester for its general purposes, and I declare that the receipt of an officer of the Parochial Church Council shall be a sufficient discharge to my executors and trustees.”

We strongly advise you to see a solicitor when writing or amending your Will

A Lasting Gift

We welcome all gifts in Wills, however large or small, and we promise to use your gift to make a difference in our parish. We have been fortunate to receive such gifts in the past, some specifically allocated such as to the Garden Society for a new mower and others without allocation. We thank unreservedly all who make gifts in their Will to St Peters.



Legacies can also be made to the Friends of St Peter's, a secular village society specifically set up to assist in maintaining and improving the structure of our lovely church building and surrounds.

To view the St Peter's website, including the latest information about development progress post opening, go to:

stpetersropley.org.uk

From the fullness of his grace we have all received one blessing after another

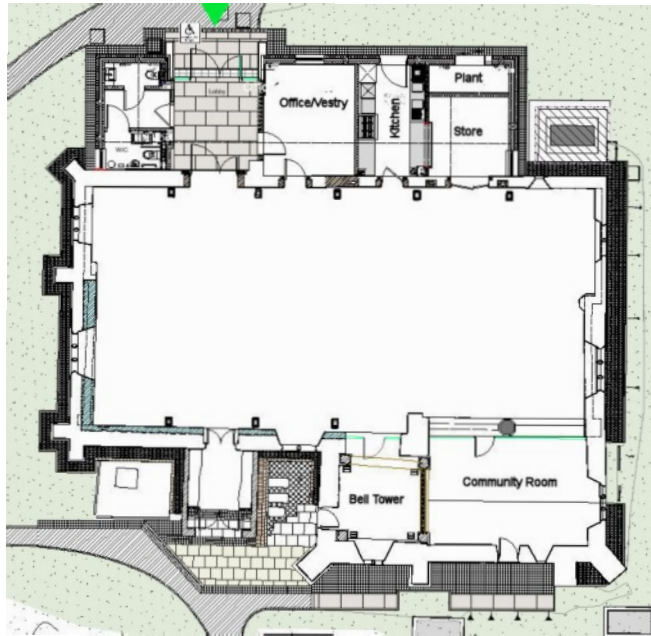
(Matthew 19:21)

Thanks to Tim Day for the 1894 picture of St Peter's

Three Simple Steps

We encourage every adult church member to:

1. Make a Will and review it regularly
2. Consider leaving a gift to your Parish
3. Request a free information pack at:
www.churchlegacy.org.uk



If you wish to speak to someone about legacies or to make a gift to your Church in memoriam, please contact our Vicar or Church Wardens via: legacies@ropleybenefice.church or via our website at: stpetersropley.org.uk/ministry-team/

Parish of Ropley



How you can make a Lasting Gift to our Parish of Ropley